

Reduction in Through Traffic

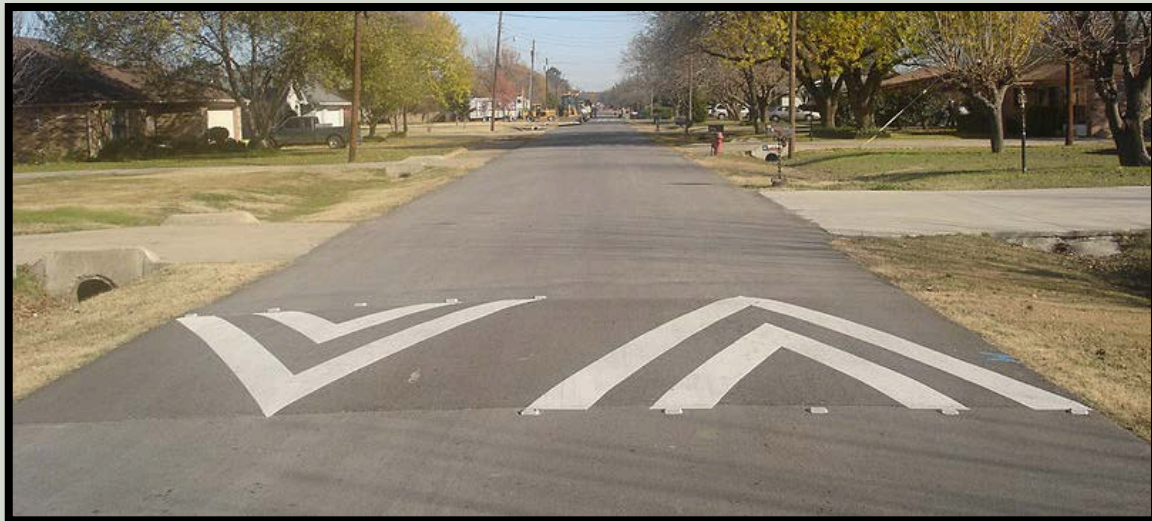
TRAFFIC CALMING

“A term that had emerged in Europe to describe a full range of methods to slow cars, but not necessarily ban them, as they move through commercial and residential neighborhoods. The benefit for pedestrians and bicyclists is that cars now drive at speeds that are safer and more compatible to walking and bicycling.”

- Federal Highway Administration

TRAFFIC CALMING MEASURES

- Horizontal Deflection; traffic circles, small roundabouts
- Vertical Deflection; humps and bumps
- Width Reduction; Bulb-outs, median islands



- Route Restriction; diverters and closures
- Traffic Control; signs, pavement markings & rumble strips

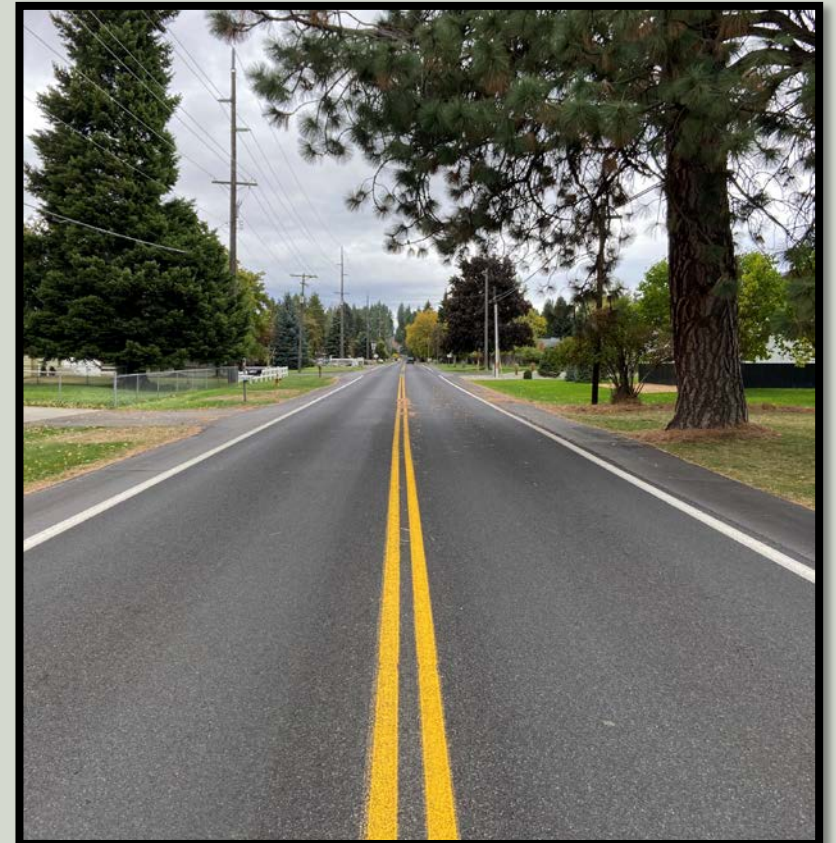
ROUTE RESTRICTION

“Street closures, generally on residential streets, can prohibit through-traffic movement or prevent undesirable turns. Street closures may be appropriate where large volumes of through-traffic or shortcut maneuvers create unsafe conditions in a residential environment”

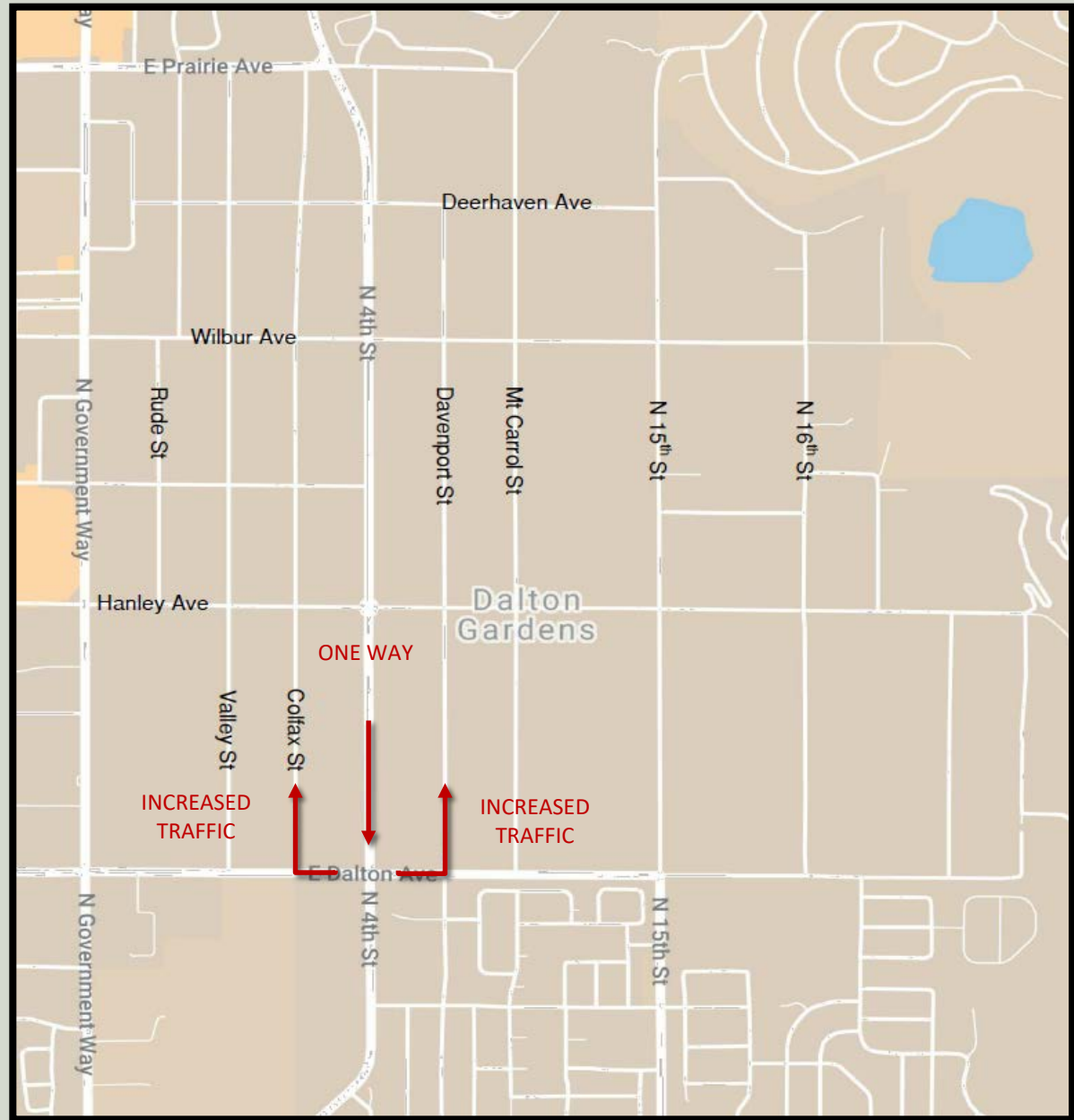
-Federal Highway Administration

Dalton Garden’s Through Traffic Issues:

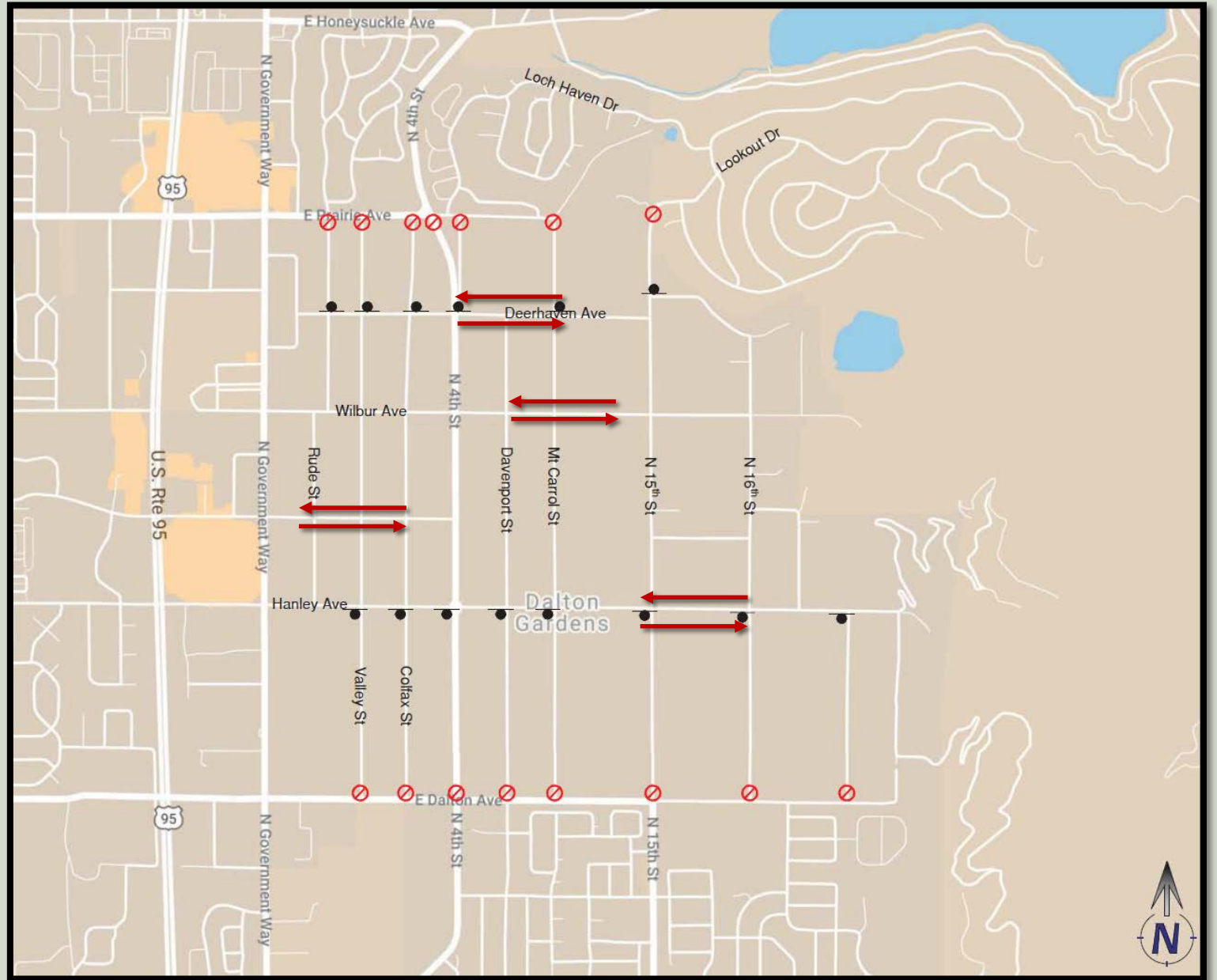
- Vehicles traveling between the cities of Coeur d’Alene and Hayden via 4th St.
- Vehicles traveling to the development off Lookout Drive via 15th St. and various East/West streets.



PARTIAL CLOSURE



FULL CLOSURE



ROUTE RESTRICTION - CONSIDERATIONS

- Potential legal/financial concerns
 - Hayden View Estates & Woodland Heights residents restricted access
 - Potential repayment of previously used Federal funds
- Appropriate signing needed at entrances to full-closure street blocks
- Traffic diversion patterns and associated impacts
 - Access for delivery vehicles, refuse trucks, school buses, other large delivery vehicles on dead end streets
 - Cars turning around on private property
 - Residents on far East of Dalton Gardens (e.g. 18th St.) drastically changing route
 - Rockridge Lane residents cut off from City streets
 - Prairie Ave & Dalton Ave residents cut off from City





CLOSURE

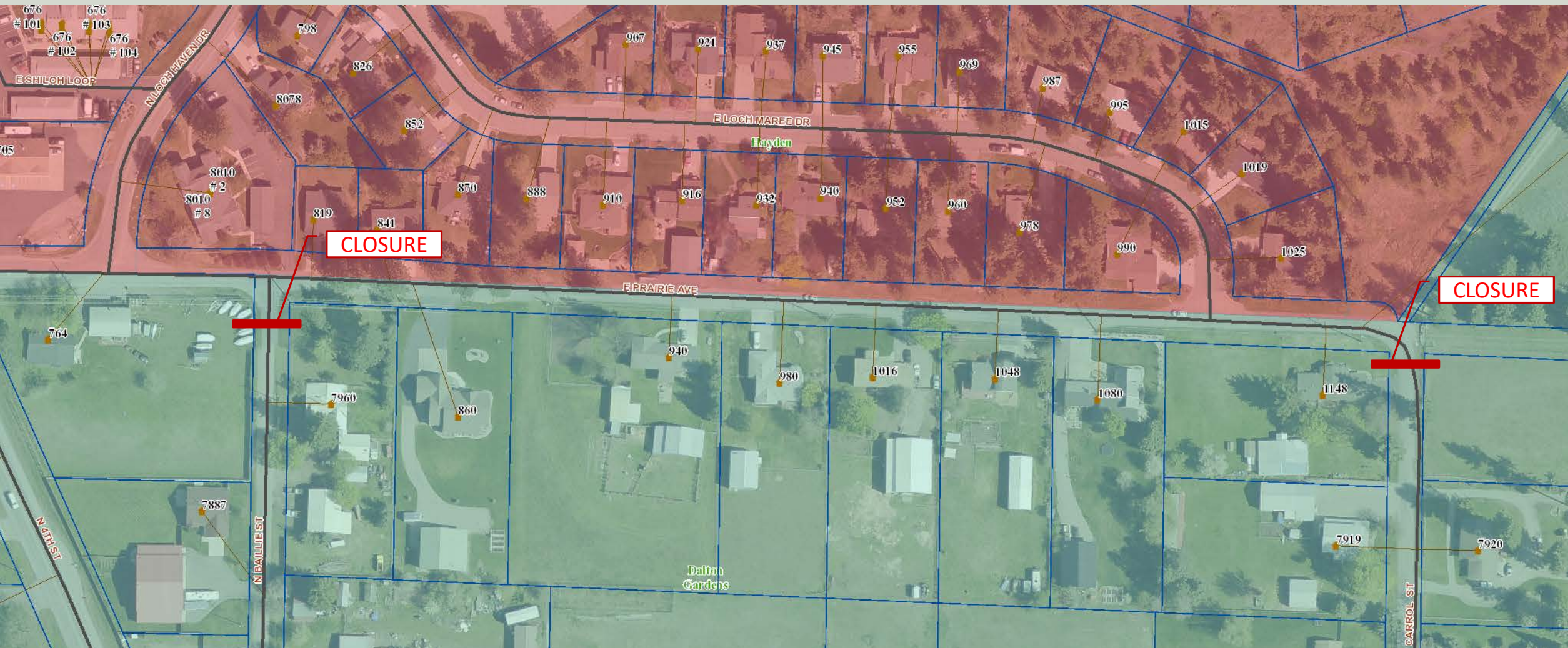
Dalton Gardens

E ROCKADES LN

E LOOKOUT DR

E SANDOWN DR

N 96TH ST



CLOSURE

CLOSURE

676 #101, 676 #103, 676 #102, 676 #104, 798, 826, 907, 921, 937, 945, 955, 969, 987, 995, 1015, 1019, 1025, 8078, 852, 8010 #2, 8010 #8, 819, 841, 870, 888, 910, 916, 932, 940, 952, 960, 978, 990, 764, 7960, 860, 940, 980, 1016, 1048, 1080, 1148, 7887, 7919, 7920, ESHLOH LOOP, NILOCHMAYEN DR, E LOCHMAREE DR, E PRAIRIE AVE, NEALLEST, DALTON GARDENS, CARROL ST, Hayden, Dalton Gardens

CLOSURE

CLOSURE

CLOSURE



ROUTE RESTRICTION – CONSIDERATIONS CONTINUED

- Concerns regarding street network connectivity and capacity
 - Traffic must divert to other local streets within City
 - Increased road maintenance on new routes (Dalton, Prairie, Wilbur, Canfield, Deerhaven)
 - Increased traffic on Dalton & Prairie
 - Adjacent communities could restrict access from Dalton Gardens onto Government way due to revised traffic patterns
- Emergency Response Issues
 - Increased emergency response times
 - KCFR requests 20 ft wide apparatus road
 - Closures require increased enforcement



Prairie Ave & Hydrangea St.

RECOMMENDATIONS

Prior to the closure of streets, it is recommended a **full traffic study** be performed to further determine the effects of such drastic changes to traffic patterns. It is important to consider where the diverted traffic is likely to shift, and the availability, capacity, and appropriateness of these alternate routes.

Consultation with residents concerning the planning and design of any proposed traffic calming measures is strongly recommended.



3882 N. Schreiber Way, Suite 104
Coeur d'Alene, Idaho
208.635.5825

